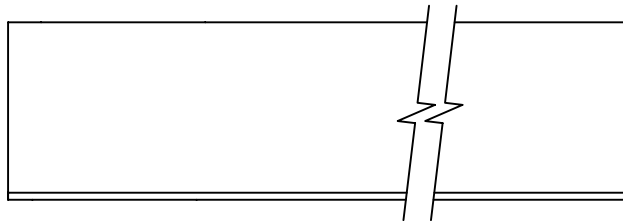
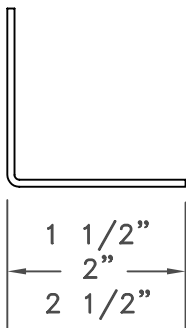


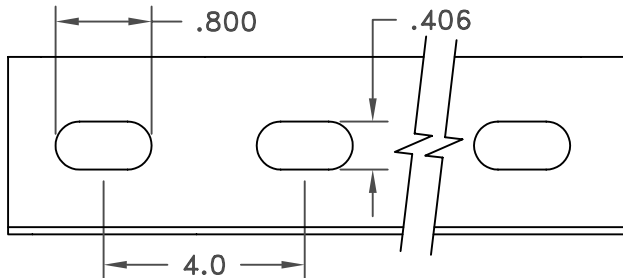
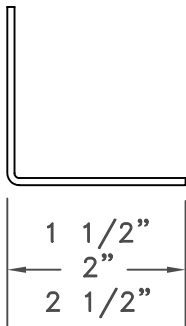
WARD COMPONENT

Solid, Slotted And Punched Angle

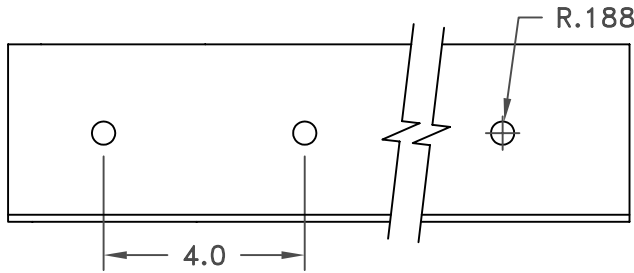
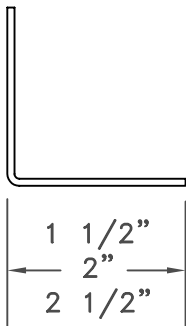
AG



Solid Angle (AGX)



Slotted Angle (AGS)



Punched Angle (AGP)

SPECIFICATIONS:

1. Rollformed metal construction

NOTES:

1. Available in 12' lengths. Contact factory for custom lengths.
2. Available in the following materials:
 - Galvanized
 - Galvaneal
 - Aluminum
 - Aluminized
 - Stainless Steel
3. Available in the following gauges:
 - 14
 - 16
 - 18
4. Holes and slots on 4" centers.
 - 3/16" holes
 - 13/16" x 3/8" slots
5. Great multipurpose product.
 - Reinforcing duct
 - Mounting angle

JOB NAME: _____	SUBMITTED BY: _____
LOCATION: _____	
ARCHITECT: _____	
ENGINEER: _____	
CONTRACTOR: _____	

