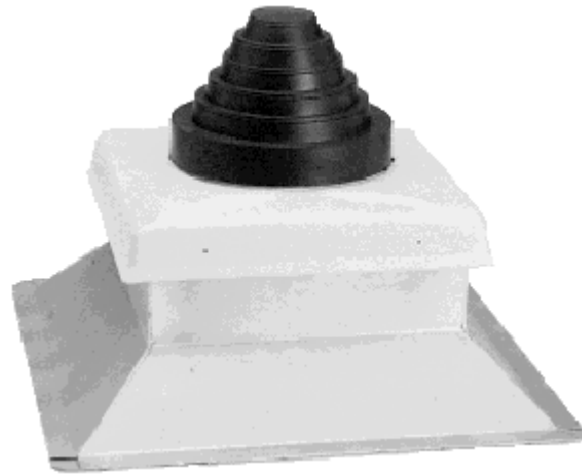




Pipe Portal Systems

Technical Product Information

New construction flashings with roof curb mountings

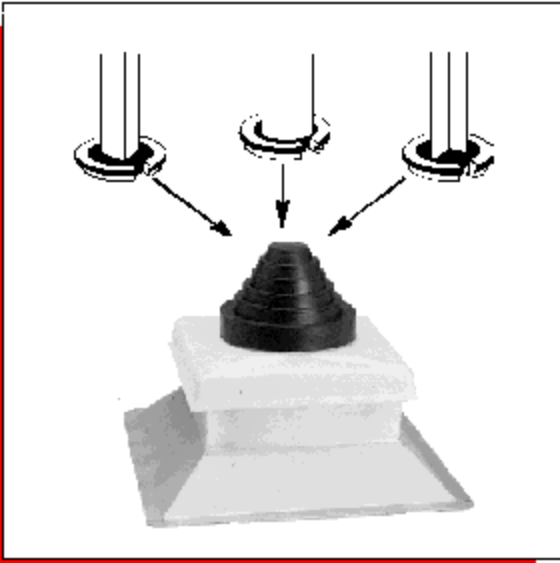


Pipe Portal® System

A versatile, leak proof and weathertight solution to routing pipes through the roof. The Pipe Portal System is designed to allow for both vertical and horizontal pipe movement, yet provide maintenance free permanent installation, which accommodates pipe sizes of .375" up to 12". The curb cover is molded from ABS plastic (Acrylonitrile Butadiene Styrene) with a laminated acrylic coating, which gives high resistance to both ozone and ultraviolet sun rays, as well as serviceable temperature range of -40F to + 160F. The molded sealing rings on the collared opening of the cover mated with the grooves in the rubber cap assures a "Weather tite Pressure Seal" and mechanical lock.

The protective rubber caps are compression molded of EPDM (Ethylene Propylene Diene Monomer) rubber with a serviceable temperature range of -60F to + 270F, and also have high resistance to both ozone and ultraviolet sun rays. The conically shaped steps of the cap provide a taut waterproof seal around the pipe and the Stainless Steel Snaplock Swivel Action clamps provided give the added protection to guarantee the pipe seal. The swivel action of the clamp cuts installation time by 75%.

Available adapters to fit
most Pipe Portal Pipe Flashings
(See adapter ring chart section for proper sizing)



Round Adapters

.5" to 3.5" (.25" Increments)



Angle Iron

1", 1.75", 3", 4"



Square Tube

3" and 4"

SELECT A CAP FOR EACH BASE REQUIRED



C-128
1- 2" TO 6" PIPE



C-412
4- 1" TO 2" PIPES



C-481
4- .375" TO 1" PIPES



C-212
2- .375" TO 1" PIPES
2- 1" TO 2" PIPES



C-182
1- 8" TO 12" PIPE

[Adapter Rings](#) can modify these penetrations
[Snaplock Clamps](#).
[Installation Instructions](#).
[CAD Page](#)

Other Flashing Systems: [Alumi-Flash](#)
[Plasti-Flash](#)
[Pipe Flashings \(boots\)](#)

NEW UPC	DESCRIPTION	QTY/CTN	LIST PRICE
---------	-------------	---------	------------

Call Customer Service For Price

PART NUMBER			PER UNIT
32005	w/ 126 BLACK CAP (1 - 2" to 6" pipe)		
32015	w/ 212 BLACK CAP (2 - .375" to 1 & 2 - 1" - 2" pipes)	5	
32025	w/ 412 BLACK CAP (4 - 1" to 2" pipes)		
32035	w/ 481 BLACK CAP (4 - .375" to 1" pipes)		
32041	w/ 182 BLACK CAP (1 - 8" to 12" pipe)	1	
32055	w/ 126 WHITE CAP (1 - 2" to 6" pipe)		
32065	w/ 212 WHITE CAP (2 - .375" to 1 & 2 - 1" - 2" pipes)	5	
32101	SMALL RC-2A STRAIGHT SIDED CURB - 11" High	1	
32111	SMALL RC-3A CANTED CURB-8" High	1	
32121	SMALL RC-4A RAISED CANTED CURB -9 1/2" High	1	
32131	LARGE RC-2A STRAIGHT SIDED CURB - 11" High	1	
32141	LARGE RC-3A CANTED CURB-8" High	1	
32151	LARGE RC-4A RAISED CANTED CURB -9 1/2" High	1	

PORTALS PLUS 815 Kimberly Drive, Carol Stream, IL 60188

TEL: (800) 624-8642 FAX: (866) 466-9335

All information is subject to change without notice. Dimensions and specifications shown are within manufacturing tolerances.
© Copyright Commercial Products Group of Hart & Cooley, Inc., January, 2009. All Rights Reserved.