



ReRoof Drains

Technical Product Information

Drain inserts for retrofit applications

Premier Seal Mechanical Expandable Rubber Seal ReRoof Drain



**Prefabricated Roof Accessories for
All Roof Systems**



ReRoof Drains

Technical Product Information

Portals Plus, the premier manufacturer of stock rooftop accessories, proudly announces the Premier Seal for Aluminum ReRoof Drains!

Portals Plus has developed a unique Mechanically Expandable Rubber Seal, "The Premier Seal". The Drain is designed to replace existing drains in retrofit applications. All installation is conducted on the roof surface. The seal is activated by tightening the internal screws with the Premier Screwdriver. The Seal utilizes PVC flanges for increased strength and stainless steel screws to compress the EPDM rubber gasket. The compression of the seal expands it and makes contact into the existing piping of the pre-existing drain, therefore, preventing vertical movement and stopping water damage into the building. The Premier Seal exceeds SPRI and ANSI Retrofit Drains requirements. The unique Portals Plus ReRoof Drains are available now in 3", 4", 5", and 6" sizes in conjunction with the aluminum ReRoof Drain.

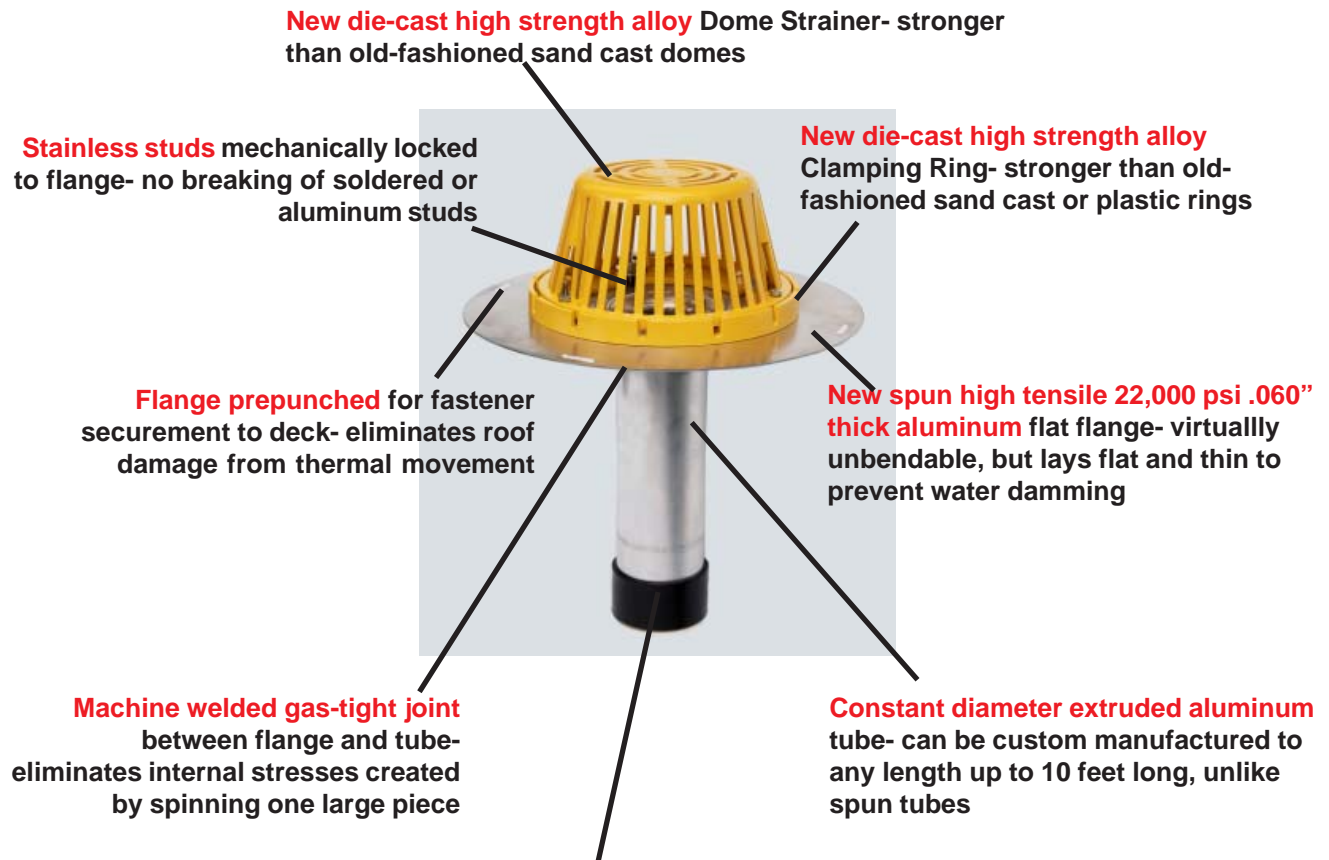


Portals Plus ReRoof Drains, and all of the problem-solving Portals Plus products, are available nationwide at local stocking distributors. Search for the right product for your application at the Portals Plus interactive website at www.portalsplus.com or call Portals Plus at 800-624-8642.



ReRoof Drains

Technical Product Information



New Premier Seal. Seal is activated with the use of the Premier Seal Screw Driver! The Seal provides a water tight seal to the existing schedule 40 piping.

New die-cast high strength alloy Dome Strainer means fewer debris-clogged drain lines due to broken domes. Further, the Dome Strainer bolts down to prevent malicious vandalism to the drain system.

New die-cast high strength alloy Clamping Ring means secure and even compression of the edge of the roofing system at the lowest point of the roof and prevents backups under the system into the insulation.

Stainless fasteners mechanically locked to the flange mean that the Clamping Ring can be truly tightened to seal the membrane without fear of snapping soldered or aluminum studs.

New spun high tensile 22,000 psi .060" thick aluminum flange remains flat for flush mounting and eliminates the water dam problem created by a thick flange.

Flange prepunched for easy securement to the deck to control thermal movement and eliminate membrane stresses.

Machine welded gas-tight joint between flange and tube creates a unitized construction which eliminates concerns about soldered joints melting and leaking and avoids the internal stresses that cause cracking in large one-piece spinings.

Constant diameter extruded aluminum tube means a sure fit and allows cutting at any point with the same diameter. This means that the seal fits the same at any point on the tube and in the drain pipe, unlike spun tubes which taper.

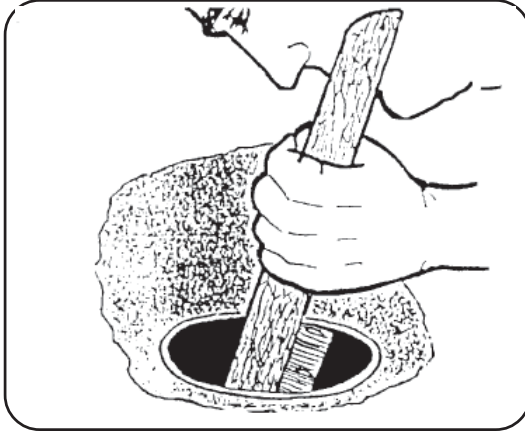
New Premier Seal! Utilites white ABS plastic to ensure better visibility during installation. Mechanical Seal provides water-tight



ReRoof Drains

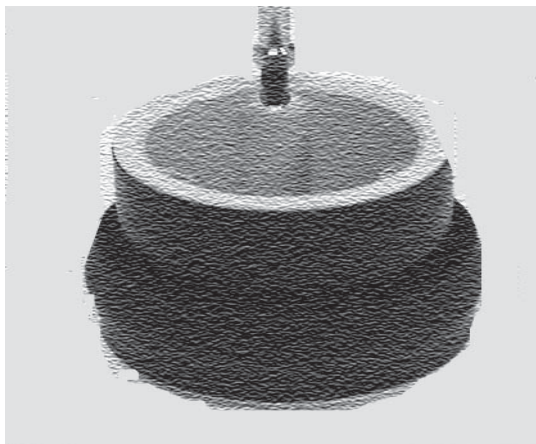
Technical Product Information

Installation Instructions



STEP 1

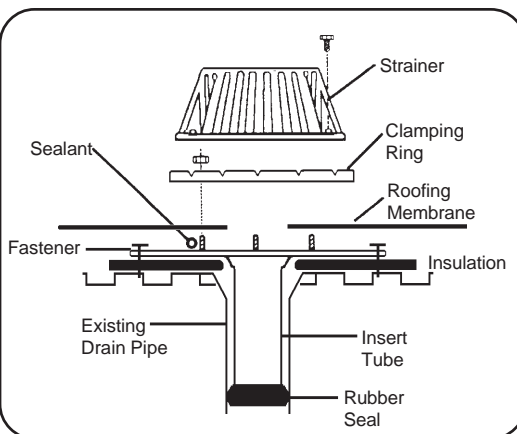
Inspect existing drain pipe to ensure there are no cracks or signs of potential failure. Using a wire brush, clean existing drain line to remove any asphalt, loose debris and other foreign material.



STEP 2

Ensure drain sleeve is the proper size before continuing. Place the Premier Seal into the tube and tighten each screw 5 rotation before place the drain into the existing drain pipe. Insert the leading edge of the rubber seal into the existing drain pipe and simply rotate the ReRoof Drain in a clockwise motion while pushing the ReRoof Drain down to seat the flange into the membrane manufacturer's recommended adhesive. The flat flange allows a flush mount. Secure the ReRoof Drain to the deck by installing insulation fasteners through the prepunched flange holes. Tighten each screw five to ten rotation then rotate to the next screw. Screws need to be tighten evenly to allow for even compression of the seal into the existing piping.

NOTE: The ReRoof Drain insert tube can be shortened in the field by cutting the tube after removing the rubber seal. Cut the end of the tube square and remove any burrs or rough edges. Replace the Premier Seal onto the end of the tube.



STEP 3

Prior to installing dome strainer and clamping ring, per Roofing Manufacturers recommendations, apply sealant on the drain flange. Bring roof membrane onto drain flange. Membrane should extend past drain clamping ring to insure membrane from slipping out. Install clamping ring and tighten so the sealant and membrane compress and form a watertight gasket. Do not tighten bolt greater than 100 torque inch pounds.

With all good roofing practice, all drains should be water tested to ensure existing drain system is free to facilitate water flow. Extended insert tubes are available for excessive insulation buildup.