

CONNECTORS

Model FLG J

J Rated Flange



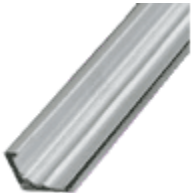
- [Quick Flange™](#) Style NOW AVAILABLE
- Rollformed 20 gauge galvanized steel
- Provides a large butyl filled integrated sealant pocket to ensure proper sealing
- Offers a metal shoulder to protect gasket
- Available in 10' and 20' lengths
- Available in specialty metals
- Recommended for 26 GA through 14 GA ductwork
- Meets SMACNA rigidity Class J for transverse joints (steel) or Class H for transverse joints (aluminum)
- Reference Ward Duct Construction Standards for application information

[Submittal Drawing](#)

[Ward Duct Construction Standards](#)

Model FLG H

H Rated Flange



- [Quick Flange™](#) Style NOW AVAILABLE
- Rollformed 22 gauge galvanized steel
- Provides a large butyl filled integrated sealant pocket to ensure proper sealing
- Offers a metal shoulder to protect gasket
- Available in 10' and 20' lengths
- Available in specialty metals
- Recommended for 26 GA through 14 GA ductwork
- Meets SMACNA rigidity Class H for transverse joints (steel)
- Reference Ward Duct Construction Standards for application information

[Submittal Drawing](#)

[Ward Duct Construction Standards](#)

Model CNR J

J Flange Corner



- Formed 12 gauge galvanized steel
- Use with Ward J Flange
- Available in specialty metals to match flange material
- Nuts and bolts included (galvanized)

[Submittal Drawing](#)

Model CNR H

H Flange Corner



- Formed 12 gauge galvanized steel
- Use with Ward H Flange
- Available in specialty metals to match flange material
- Nuts and bolts included (galvanized)

[Submittal Drawing](#)

Model CNR TC

TDC Flange Corner

- Formed 16 gauge galvanized steel
- Use with TDC formed flange
- Available in specialty metals to match flange material

[Submittal Drawing](#)

Model CNR TF

TDF Flange Corner



- Formed 16 gauge galvanized steel
- Use with TDF formed flange
- Available in specialty metals to match flange material

[Submittal Drawing](#)

Model CNR CC

Cornermatic TDC Flange Corner

- Formed 16 gauge galvanized steel
- Use with TDC formed flange
- Designed to be used with Cornermatic corner injection machines

[Submittal Drawing](#)

Model CNR CF

Cornermatic TDF Flange Corner

- Formed 16 gauge galvanized steel
- Use with TDF formed flange
- Designed to be used with Cornermatic corner injection machines

[Submittal Drawing](#)

Model CLT W

W Cleat

- Formed 20 gauge galvanized steel
- Available in 10' or 6" lengths
- Available in specialty metals to match flange material
- Available in .070" thick extruded PVC for breakaway connections (6" only)
- Use with Ward J and H Flange, as well as TDC formed flange

[Submittal Drawing](#)

Model CLT F

F Cleat

- Formed 20 gauge galvanized steel
- Available in 10' or 6" lengths
- Available in specialty metals to match flange material
- Available in .070" thick extruded PVC for breakaway connections (6" only)
- Use with TDF formed flange

[Submittal Drawing](#)

Model SLF

Flat Slip



- Rollformed galvanized steel
- Available in 22 through 26 gauge
- Available in 10' and 5' lengths
- Available in specialty metals
- Reference SMACNA Duct Construction Standards for approved applications

[Submittal Drawing](#)

Model SLS

Flat Slip



- Rollformed galvanized steel
- Available in both ½" and 1" heights
- Available in 20 through 26 gauge
- Available in 10' and 5' lengths
- Available in specialty metals
- Reference SMACNA Duct Construction Standards for approved application

[Submittal Drawing](#)

Model DRF

Flat Drive



- Rollformed galvanized steel
- Available in 22 through 26 gauge
- Available in 10' and 5' lengths
- Available in specialty metals
- Reference SMACNA Duct Construction Standards for approved applications

[Submittal Drawing](#)

Model DRS

Flat Drive



- Rollformed galvanized steel
- Available in 1" height
- Available in 20 through 26 gauge
- Available in 10' and 5' lengths
- Available in specialty metals
- Reference SMACNA Duct Construction Standards for approved applications

[Submittal Drawing](#)

Model KKC

Keating Coupling



- Formed 20 gauge galvanized steel
- Provides a large butyl filled integrated sealant pocket to ensure proper sealing
- Available for both round and flat oval duct
- Available in sizes ranging from 10" to 72"
- Available in specialty metals
- Provides a connection which is virtually air-tight up to 16" S.P.
- Provides a smooth, clean appearance for exposed installations

[Submittal Drawing](#)

Model QFC

Quick Flange



- Formed 16 gauge galvanized steel
- Available for both round and flat oval duct
- Available in sizes ranging from 10" to 72"
- Available in specialty metals
- Provides a quick and easy method for connecting round and oval duct

[Submittal Drawing](#)

Model QCC

Quick Connect



- Formed 24 gauge galvanized steel
- Contains closed cell polyethylene gasket to ensure proper sealing requirements
- Available for round duct
- Available in sizes ranging from 3" to 12"
- Provides a quick and unique connection for round duct

Submittal Drawing