

# ACCESSORIES

---

## Model W H WP CH

### Weld Pins



- Unique 4-sided point assures needle-like penetration into the thickest insulation
- The insulation is protected by our exclusive oversized cupped head to prevent tearing
- Compatible with most weld machines to apply weld pins up to 2 inches in length

## Model VNN-VNA

### Turning Vane



- Roll formed 24 gauge galvanized steel (4")
- Roll formed 26 gauge galvanized steel (2")
- Available in 10' lengths
- Available in specialty metals
- Double wall turning vane design in accordance to SMACNA guidelines
- Acoustical vane utilizes a perforated inner vane wall and insulation for sound absorption
- Use with Turning Rail for proper installation

[Submittal Drawing](#)

## Model RAL

### Turning Rail

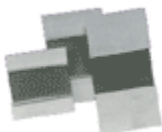


- Roll formed 22 gauge galvanized steel (4")
- Roll formed 24 gauge galvanized steel (2")
- Available in 10' lengths
- Available in specialty metals
- Turning rail design in accordance to SMACNA guidelines
- Provides extra wide margin for easy fastening
- Rail stacks to minimize storage and shipping requirements
- Self-aligning tabs for easy vane installation
- Use with Turning Vane for proper installation

[Submittal Drawing](#)

## Model FC

### Flexible Duct Connector



- Roll formed galvanized steel and fabric
- Available in both commercial and residential grades
- Available with two different styles of seam wraps

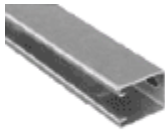
- Available in 100' rolls
- Available in specialty metals
- All fabrics rated to 10" S.P.
- Absorbs sound and vibration to prevent from transmitting throughout system
- Reference fabric chart for a summary of the available fabrics

[Submittal Drawing](#)  
[Fabric Selection Chart](#)

---

## Model TZH

### Trapeze Hanger



- Roll formed galvanized steel
- Slotted holes 2.25" on center
- Available in both 16 and 18 gauge
- Available in 10' lengths
- Inexpensive, yet strong alternative to standard strut systems
- Compatible with multiple clamp and component items
- Use trapeze washer and threaded rod for a complete system

[Submittal Drawing](#)

---

## Model AG

### Angle Iron - Solid, Punched and Slotted



- Roll formed galvanized steel
- Slotted and punched holes 4" on center
- Available in 14, 16 and 18 gauge
- Available in 12' lengths
- Available in specialty metals
- Great multipurpose product

[Submittal Drawing](#)

---

## Model SH

### Hanger Strap



- Galvanized steel
- Available in gauges ranging from 16 to 24
- Available in 200' rolls or 10' flat blanks
- Great multipurpose product for hanging ductwork
- Use with strap buckle for quick and easy installation

[Submittal Drawing](#)

---

## Model THR

### Threaded Rod



Submittal Drawing

- Zinc plated threaded rod
- Available in standard thread diameters ranging from 1/4" to 7/8"
- Available in 6', 10' or 12' lengths
- Use with trapeze hanger and washer for a complete hanging system

---

## Model RL

### Rod Lock



Submittal Drawing pg.

1

Submittal Drawing pg.

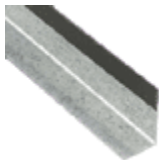
2

- Zinc plated grade 5 bolt
- Zinc plated washer with neoprene gasket
- Zinc plated nut with spring steel seat plates
- Available in both 1/2" and 3/4" sizes
- Use with standard conduit to provide quick and easy installation of tie
- Use for both joint and center tie rods
- Pull tested to over 1900 lbs.
- Use rod lock tool for easy installation
- Consult SMACNA Duct Construction Standards for application specifications

---

## Model BN

### Bull Nosing



Submittal Drawing

- Formed 26 gauge galvanized steel
- Self-adhesive tape provides quick and easy installation
- Available in sizes for insulation from 1/2" to 2" thick
- Consult SMACNA Duct Construction Standards for application specifications