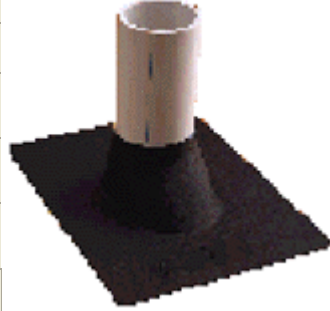


## SHINGLE FLASHING SYSTEMS

[Shingle Flashings](#)- for effectively sealing pipe penetrations on shingle roofs. Shingle Flashings provide permanent elastic seals at pipe penetrations from 1- 1/4" to 4" round on all shingle roofing systems up to a 40 degree slope. Portals Plus Shingle Flashings consist of an elastomeric collar locked into a nailable rigid base which integrates into the shingle roofing system. Also available is an all elastomeric one piece Shingle Flashing which can accommodate roof slopes up to 45 degrees. Shingle Flashings are the solution to temporary, leaky field- fabricated sheet metal and roof cement flashings.

<b>ELASTOMERIC</b>			
NEW UPC PART NUMBER	SIZE	DESCRIPTION	LIST PRICE PER UNIT
<a href="#">85109</a>	1.25" - 1.50"	ELASTOMERIC FLASHING BASE w/ elastomeric collar	
<a href="#">85119</a>	2"	ELASTOMERIC FLASHING BASE w/ elastomeric collar	
<a href="#">85129</a>	3"	ELASTOMERIC FLASHING BASE w/ elastomeric collar	
<a href="#">85139</a>	4"	ELASTOMERIC FLASHING BASE w/ elastomeric collar	



Call Customer Service For Price