



Deck-Mates

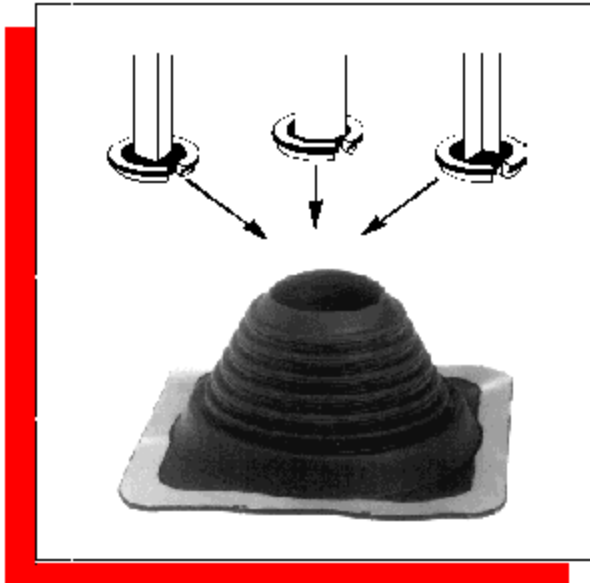
Technical Product Information

Flashings for metal roof and wall systems

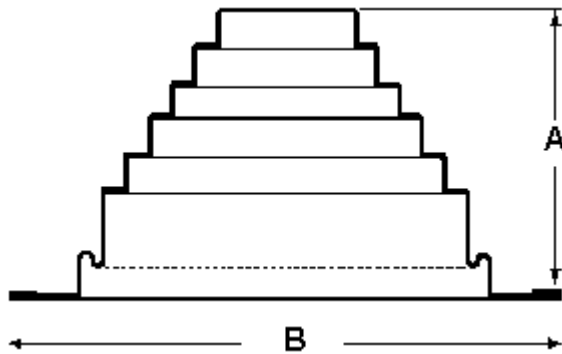
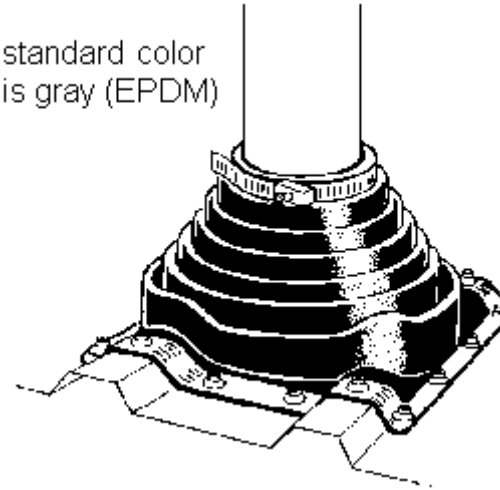


Deck-Mate

The Portals Plus Deck-Mate is designed to accommodate projections from .125" to 26" in diameter, and work in conjunction with any configuration of corrugated metal roof. The Deck-Mate comes in two styles, standard for normal projection flashing and retrofit style for use with projections that can not be disconnected. The Deck-Mate is engineered so the aluminum flanged base bends to any contours, roof irregularities, or pitches. The Deck-Mate seals watertight to the roof panel with an approved sealant and standard roofing fasteners. Deck-Mate is available in two materials - EPDM for normal use and Silicone for high temperature pipes. Adapters available for round, square tube, and angle iron available to fit most Deck-Mates.



standard color
is gray (EPDM)



DECK-MATE SIZING CHART

MODEL	SIZE (O.D. of pipe)	A	B
D.M. 0	.125"-.75"	.75"	2.25"
D.M. 1	.25"-2"	3"	4.5"
D.M. 2	1.25"-3"	4"	6"
D.M. 3	.25"-4"	4"	8"
D.M. 4	3"-6"	5"	10"
D.M. 5	4"-7"	5"	11"
D.M. 6	5"-9"	6"	12"
D.M. 7	6"-11"	6"	14"
D.M. 8	7"-13"	6"	17"
D.M. 9	10"-18"	8"	25"
D.M. 10	13"-26"	8"	34"

Call Customer Service For Price

EPDM DECK-MATE			
NEW UPC PART NUMBER	DESCRIPTION	QTY/ CTN	LIST PRICE PER UNIT
81006	DM#0 1/8" - 3/4"	15	
81016	DM#1 1/4" - 2"	15	
81026	DM#2 1" - 3-1/4"	15	
81036	DM#3 1/4" - 4"	15	
81040	DM#4 3" - 6"	10	
81050	DM#5 4" - 7"	10	
81060	DM#6 5" - 9"	10	
81070	DM#7 6" - 11"	10	
81085	DM#8 7" - 13"	5	
81091	DM#9 10" - 18"	1	
81101	DM#10 13" - 26"	1	

SILICONE DECK-MATE - HIGH TEMPERATURE w/CLAMP			
NEW UPC PART NUMBER	DESCRIPTION	QTY/ CTN	LIST PRICE PER UNIT
82016	SDM#1 1/4" - 2"	15	
82026	SDM#2 1" - 3-1/4"	15	
82036	SDM#3 1/4" - 4"	15	
82040	SDM#4 3" - 6"	10	
82050	SDM#5 4" - 7"	10	
82060	SDM#6 5" - 9"	10	
82070	SDM#7 6" - 11"	10	
82085	SDM#8 7" - 13"	5	
82091	SDM#9 10" - 18"	1	
82101	SDM#10 13" - 26"	1	

RETROFIT DECK-MATE			
NEW UPC PART NUMBER	DESCRIPTION	QTY/ CTN	LIST PRICE PER UNIT
83031	RDM#3 RETROFIT 3/4" - 2 3/4"	1	
83051	RDM#5 RETROFIT 2" - 7-1/4"	1	
83081	RDM#8 RETROFIT 3 3/4" - 10"	1	

[Adapters](#) available for round, square tube, and angle iron available to fit most Deck-Mates.

[Installation Instructions.](#)
[Deck-Mate Quick Reference Tech Data.](#)
[CAD Page](#)

PORTALS PLUS 815 Kimberly Drive, Carol Stream, IL 60188

TEL: (800) 624-8642 FAX: (866) 466-9335

All information is subject to change without notice. Dimensions and specifications shown are within manufacturing tolerances.
© Copyright Commercial Products Group of Hart & Cooley, Inc., January, 2009. All Rights Reserved.