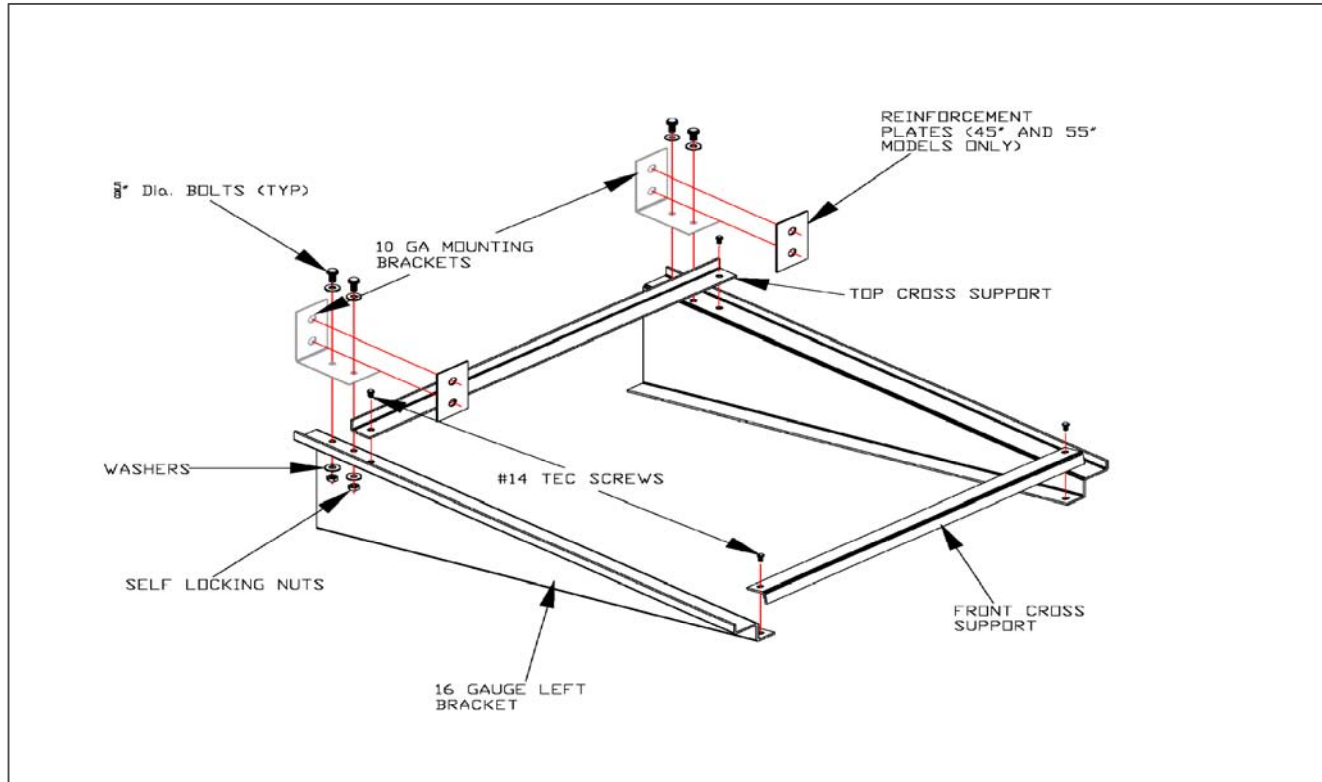


WARD INSTALLATION

AC

Air Conditioner Support

For Cantelivered Support Off The Side of a Building



1. Lay all parts out. Determine width of unit. Width is determined by top cross support (standard is 30").
2. If necessary, trim top cross support to desired width. If necessary, trim front cross support 4" shorter Than Top Cross support.
3. Attach top cross support by using (1) screw in each side. Attach front cross support (to the bottom ledge) using (1) screw in each side.
4. Measure unit for squariness, square up unit.
6. Secure cross supports with a second screw in each side. For optimum rigidity, space screws diagonally from each other.
7. Attach heavy 10 gauge mounting brackets with (2) sets of $\frac{5}{8}$ " dia bolts, washers, and self locking nuts on each bracket side as shown in the illustration above.
8. Mount bracket to structure; If only using (1) mounting hole, use the bottom hole. No hardware is supplied for mounting the bracket to any building or fixture. The mounting and hardware are the sole responsibility of the installer.
9. 10 guage flat reinforcement plates are to be used on 45" and 55" model AC brackets only. Reinforcement plates are to be fastened to the front side of the mounting brackets as shown in the illustration above.