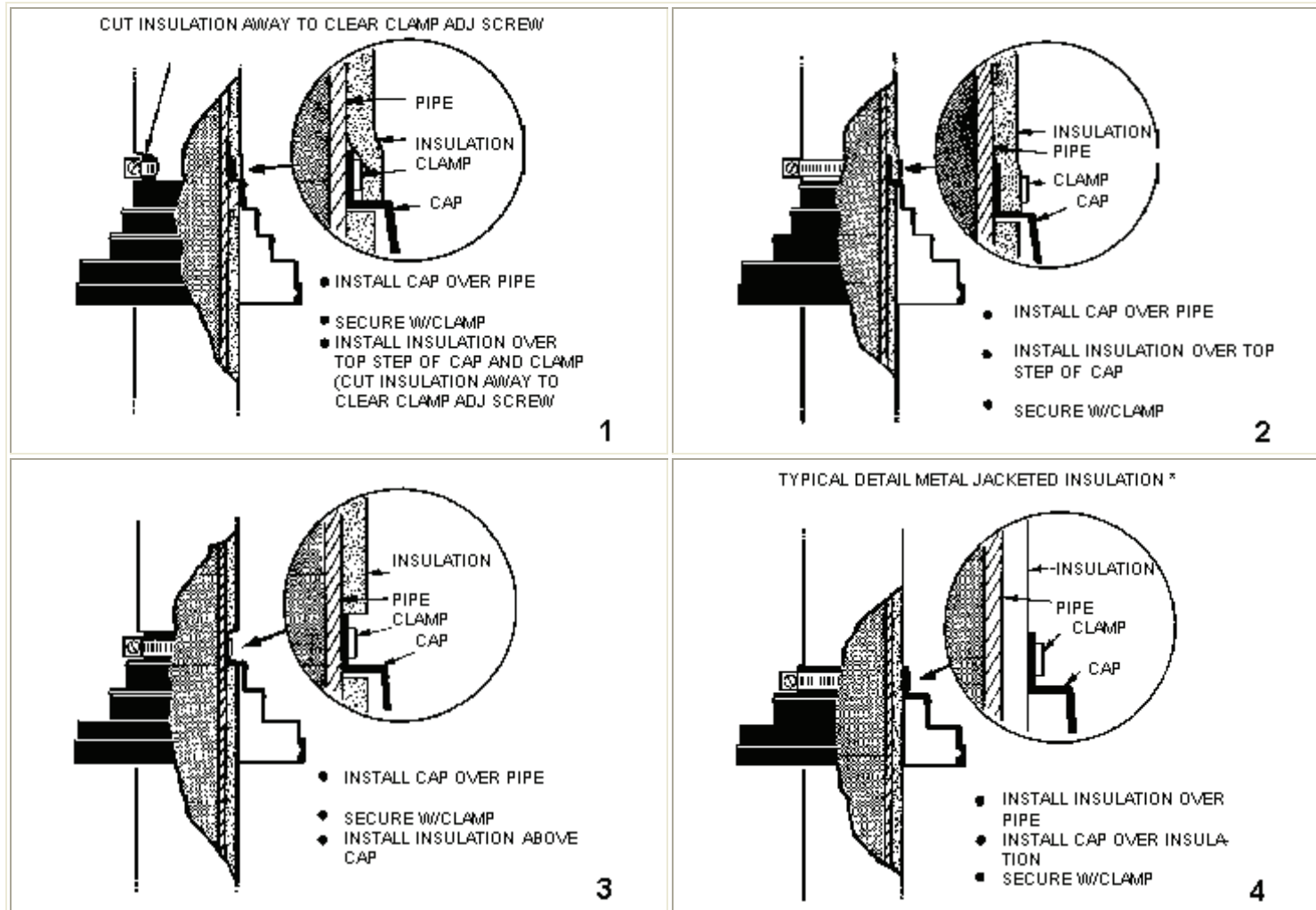
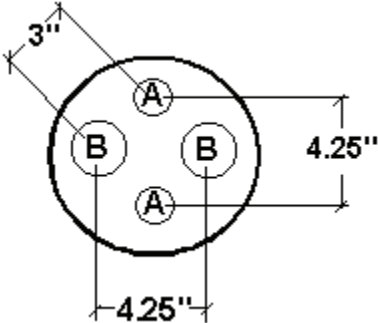
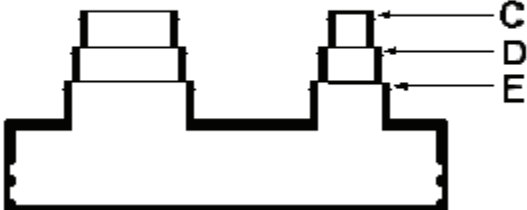


PIPE PORTAL CAP INSTALLATION TECHNIQUES WITH INSULATED PIPE



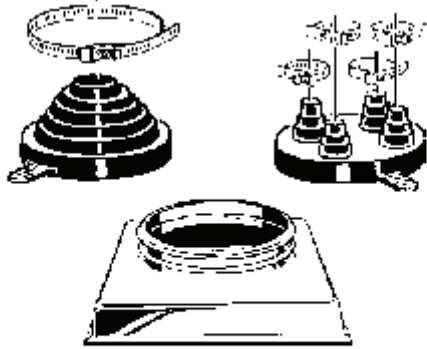
**PIPE LAYOUT REFERENCE CHART**



CAP MODEL	A			B		
	C	D	E	C	D	E
C-212	.375"	.75"	1"	1"	1.5"	2"
C-412	1"	1.5"	2"	1"	1.5"	2"
C-481	.375"	.75"	1"	.375"	.75"	1"

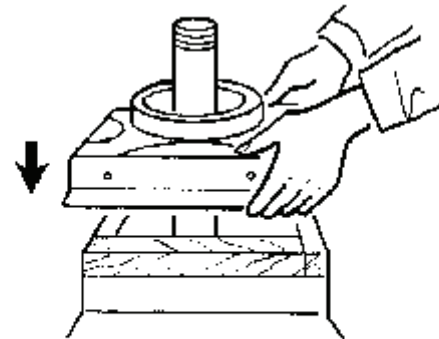
\*Note: With installation 2 and 4, watertightness depends directly upon watertightness of metal jacketed insulation.

**Installation Instructions**



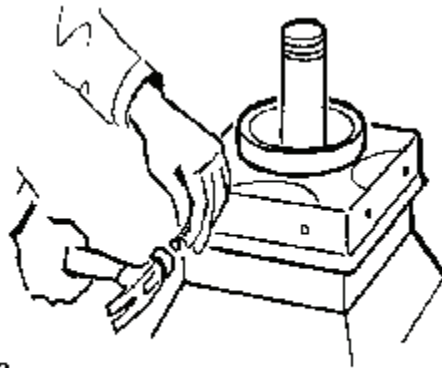
**STEP 1**

Check parts to insure that all necessary components are available.



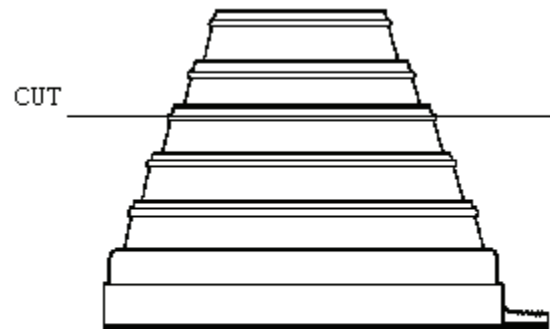
**STEP 2**

Flash curb in accordance with roof manufacturer's recommendations and slip curb cover over pipe(s) and seat on curb.



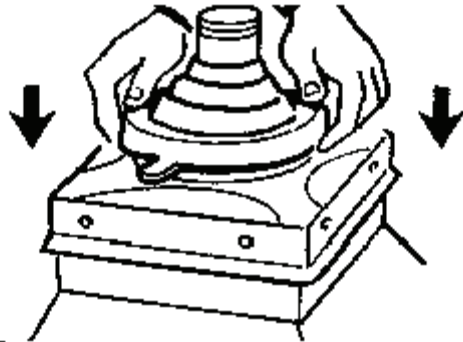
**STEP 3**

Nail (or screw) curb cover to curb using prepunched holes in cover.



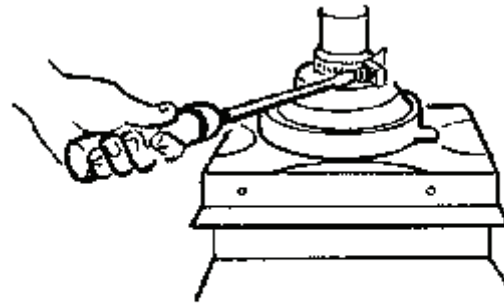
**STEP 4**

Select proper step on rubber cap to accommodate pipe(s) being used - cut off nipple above index ring.



**STEP 5**

Slip cap down over pipe(s) and on to collar - Press around edges to be sure rubber cap is properly seated around the beaded ring of the collar.



**STEP 6**

Install stainless steel clamp around rubber and tighten screw. Complete installation.

**PORTALS PLUS** 815 Kimberly Drive, Carol Stream, IL 60188

TEL: (800) 624-8642 FAX: (866) 466-9335

All information is subject to change without notice. Dimensions and specifications shown are within manufacturing tolerances.  
© Copyright Commercial Products Group of Hart & Cooley, Inc., January, 2008. All Rights Reserved.